

11 Greek Street

Soho | W1

Bright Contemporary Office Suites
In The Heart of Soho Available Now

RUBIX

[View online](#)

11 Greek Street is an attractive Georgian style building which offers bright, contemporary office suites. Greek Street runs parallel with Dean Street and is just off Soho Square, a hub of activity all year round.

Amenities

- Bright and airy contemporary office suites
- Original sash windows
- Openable windows
- 'Plug and Play' solution available
- Communal kitchen & break out facilities
- 24 hour access
- WC's

Term

New lease available direct from the Landlord.

Transport



TCR
5 mins

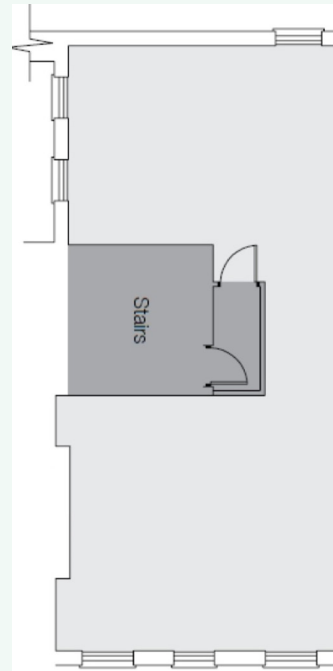


Leicester Square
5 mins



Covent Garden
8 mins

Floor Plan



Availability

FLOOR	SQ M	SQ FT	RENT/PSF	RATES/PSF	S.C / PSF	TOTAL/MONTH
4	45.52	575	£45.00	£19.00	TBC	£3,545
3	61.59	660	£45.00	£19.00	TBC	£4,070
2	58.72	623	£45.00	£19.00	TBC	£3,842
1	57.79	616	£45.00	£19.00	TBC	£3,799
TOTAL	229.84	2,474				

Rubix Real Estate Ltd for themselves and for the vendors or lessors of this property whose agents they are given notice that:- (1) The particulars are set out as a general outline for the guidance of the intending purchasers and do not constitute part of an offer or contract; (2) All descriptions, dimensions, references to condition and necessary permissions for use and occupation and other details are given without responsibility and any intending purchasers should not rely on them as standards or representations of fact but must satisfy themselves by inspection or otherwise as to the correctness of each of them; (3) No persons in the employment of Rubix Real Estate Ltd has any authority to make or give any representation or warranty whatsoever in relation to this property.



Contact us

Viewing is strictly by prior appointment with Rubix.

Natalie Lelliott
e natalie@rubix.london
m [07776 388 567](tel:07776388567)

Oliver Hawking
e oliver@rubix.london
m [07714 145 970](tel:07714145970)



rubix.london